

# SEMI-AUTO ROTARY MEASUREMENT STATION CODE ATU-01B

CUSTOMIZED ACCORDING  
TO WORKPIECES



inductive probe

measurement device

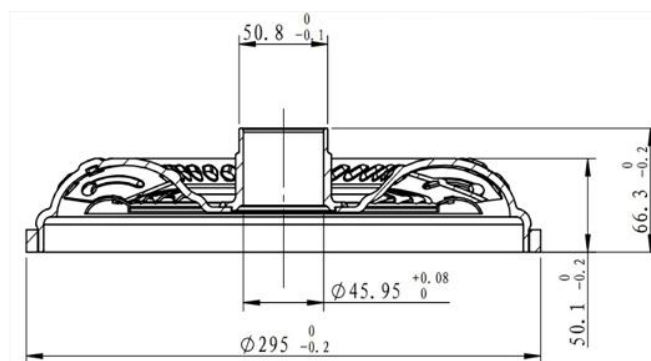


workpiece fixture and rotating plate

- Inductive probe with control system and SPC measurement system to complete the workpiece measurement
- Manual placement of calibration and workpiece, manual scanning of workpiece QR code, QR code is automatically associated with the inspection program
- Manual activation of the button, the motor automatically rotates and automatically completes the calibration and measurement



measured workpiece



drawing of the measured workpiece

## SPECIFICATION

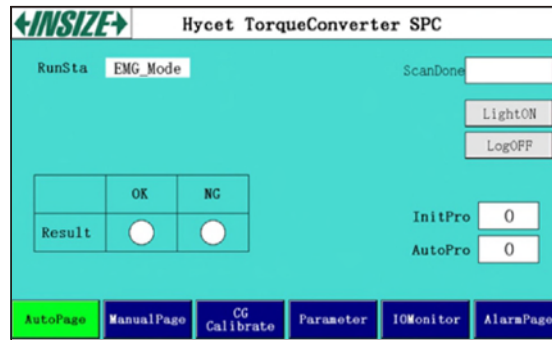
Repeatability	10µm
Measurement cycle time	46s
Power supply	AC 220V, 50Hz
Air supply	0.45-0.7Mpa

## STANDARD DELIVERY

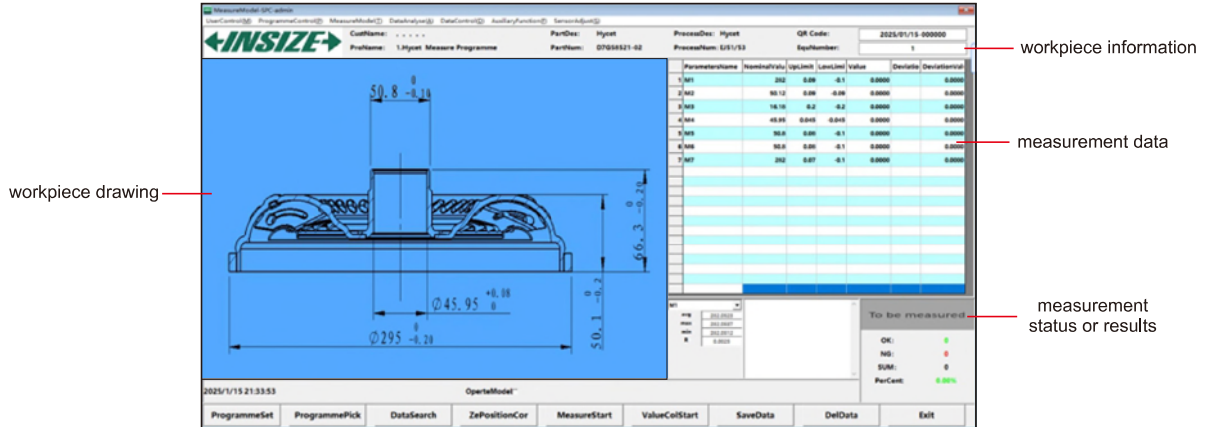
Measurement mechanism	1 set
Electric control cabinet	1 set
Industrial computer	1 pc
Scanner	1 pc
SPC measurement system	1 set
Control system	1 set

## Control system

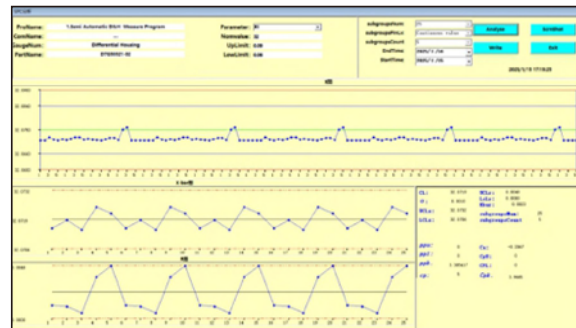
- Commissioning of measurement programs and control of measurement items
- Monitoring of measurement status, alarms for abnormal conditions



## SPC measurement system



- Simultaneous display of measurement data and automatic judgment of measurement results (green when within tolerance, red when out of tolerance)
- Measurement data can be analyzed by SPC, CG and GRR
- Measurement data can be exported to Excel report



SPC analysis



CG analysis



GRR analysis